

PropStream

Integrated Proppant Logistics Solution

TECH SHEET



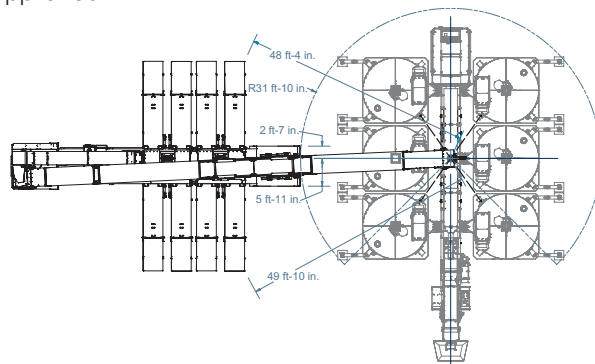
Top-Fill
Conveyor

The **FB Top-Fill Conveyor** is a drive-over system that quickly unloads sand from multiple hopper-bottom trailers and top fills FB Silos. The patent pending technology eliminates pneumatic silo loading to improve transfer time and significantly reduce silica dust emissions and noise pollution.

A telescopic, swivel mounted discharge chute aligned by video enables rapid filling of multiple silos. Fully enclosed conveyors further reduce silica dust release.

Features and Benefits

- ▶ Hopper-bottom trailer unloading
 - Reduces average loading time to less than 10 minutes
 - Eliminates pneumatic unloading
 - Reduces silica dust emissions
 - Reduces truck unload time
- ▶ Simultaneously stage multiple trailers
 - Improves unloading/loading workflow
- ▶ Telescopic swivel discharge chute
 - Loads all silos 80% faster from a single position
 - Minimizes wellsite footprint
- ▶ Top-mounted positioning camera
 - Increases speed, improves alignment of discharge chute with the FB Silo intake
- ▶ Fully enclosed conveyors
 - Minimizes silica dust exposure to personnel and equipment during loading and unloading; compliant with OSHA-PEL
- ▶ Hydraulic cylinder lock
 - Enhances safety by preventing conveyor belt from free falling in the event of hydraulic failure
- ▶ LED lighting system
 - Built-in system enhances reliability, safety and efficiency
 - Improves worksite visibility
- ▶ Emergency shutdown incorporated in all major systems
 - Improves safety
- ▶ Certified engineer approved



Ultimate Flexibility

The FB Top-Fill Conveyor is part of the PropStream Integrated Proppant Logistics solution that allows you to tailor last mile proppant supply to specific wellsite logistical and operation requirements using the industry's only integrated silo and container options.

Power Specifications

Engine: 130 HP diesel, Tier 4
(included, self-contained)

Wind Load Rating

40 mph at maximum 3% grade

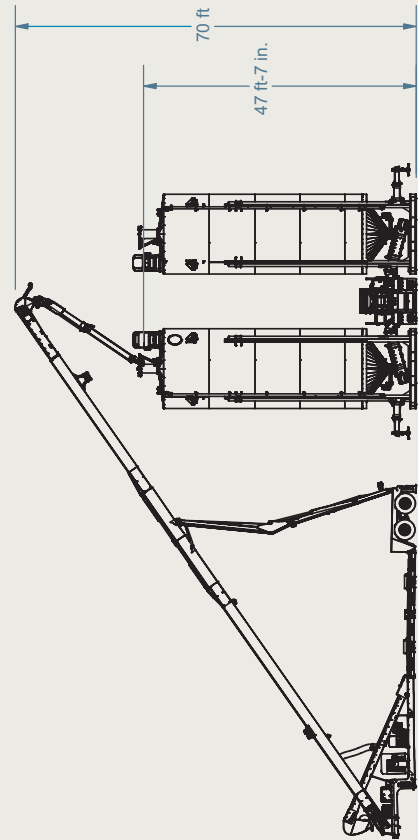
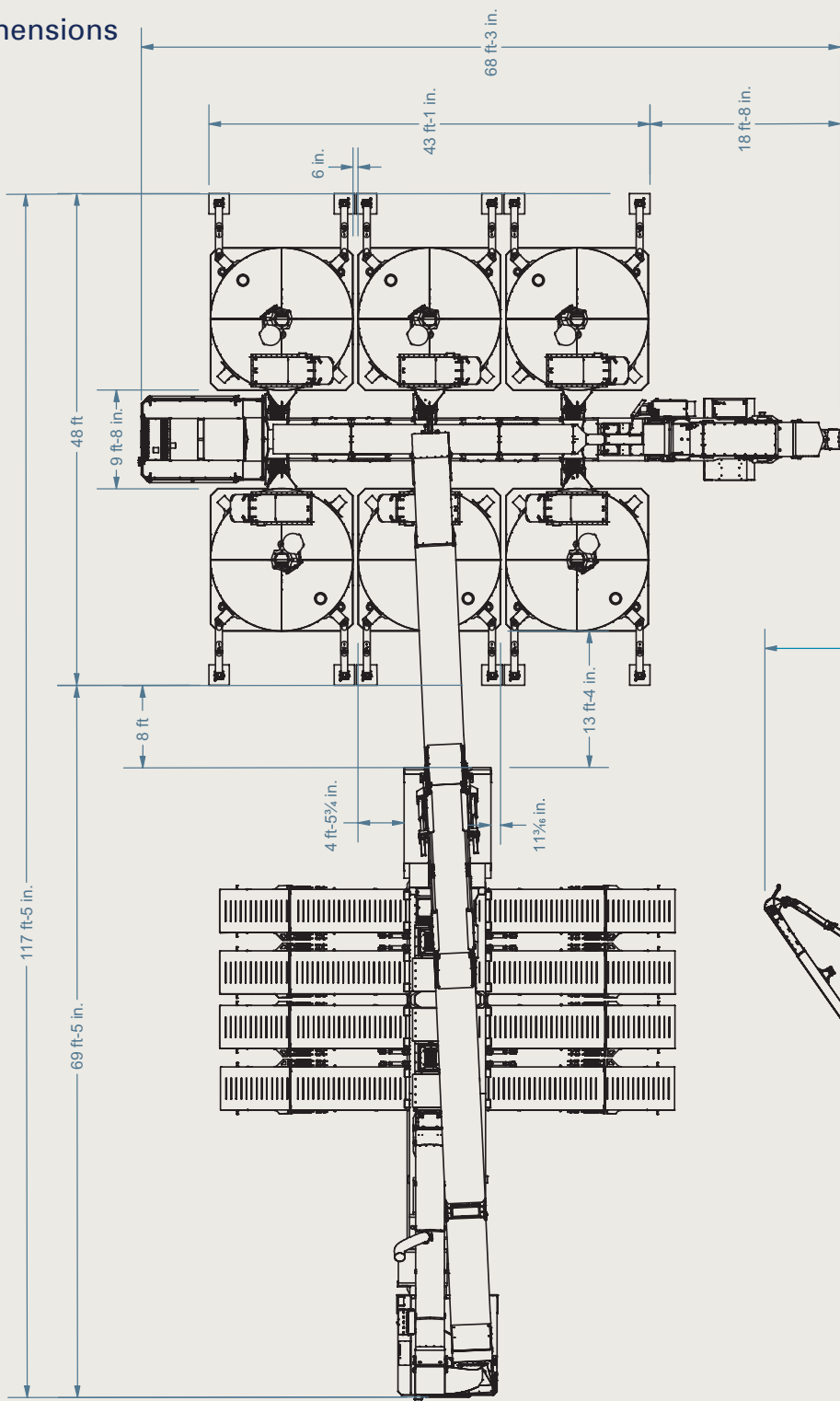
Ground Compaction Requirements

3 tons/ft²

Unit Weight

67,320 lb

Dimensions



CONTACT US

Houston Office
 1330 Post Oak Blvd., Suite 600
 Houston, Texas 77056
 P: 713.980.6200
 F: 713.980.6201

Propstream-Logistics.com